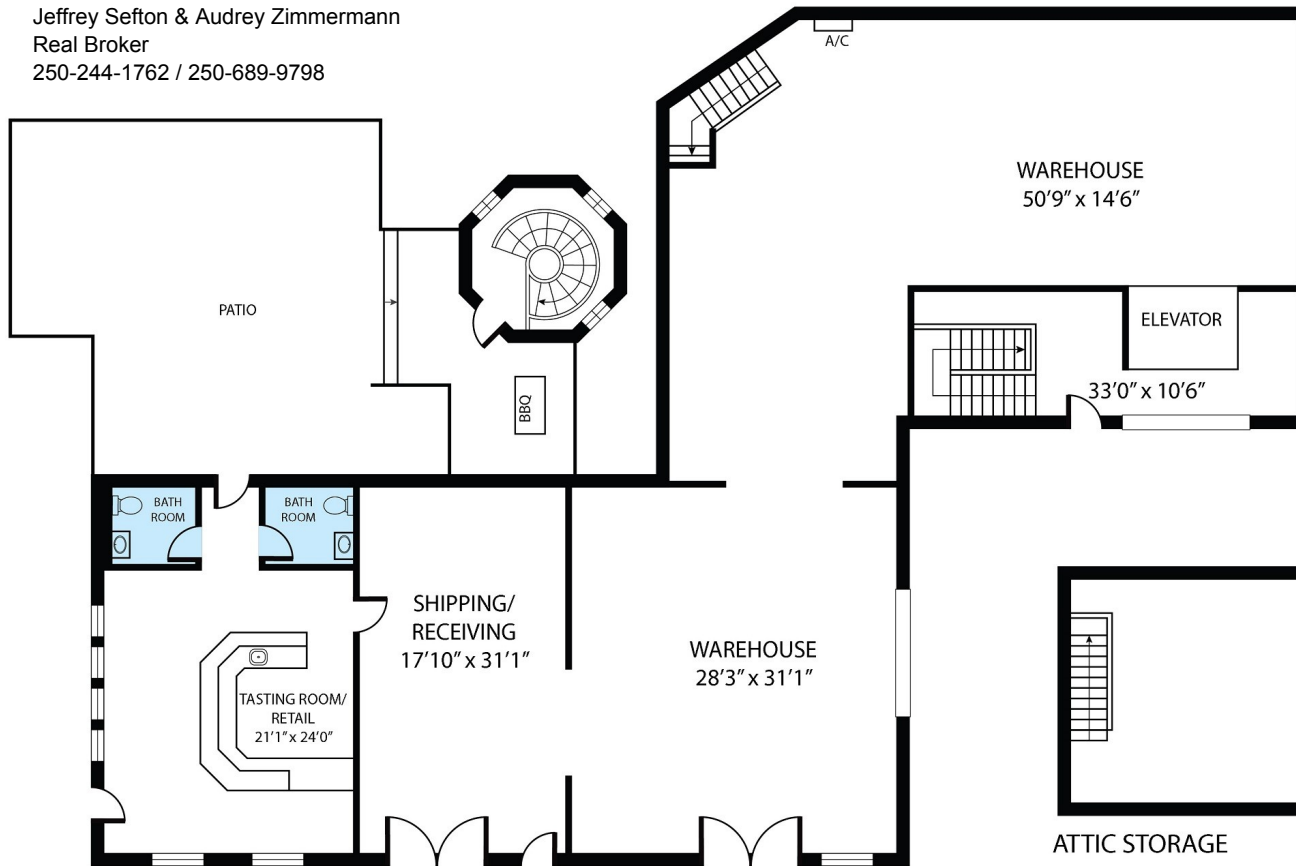


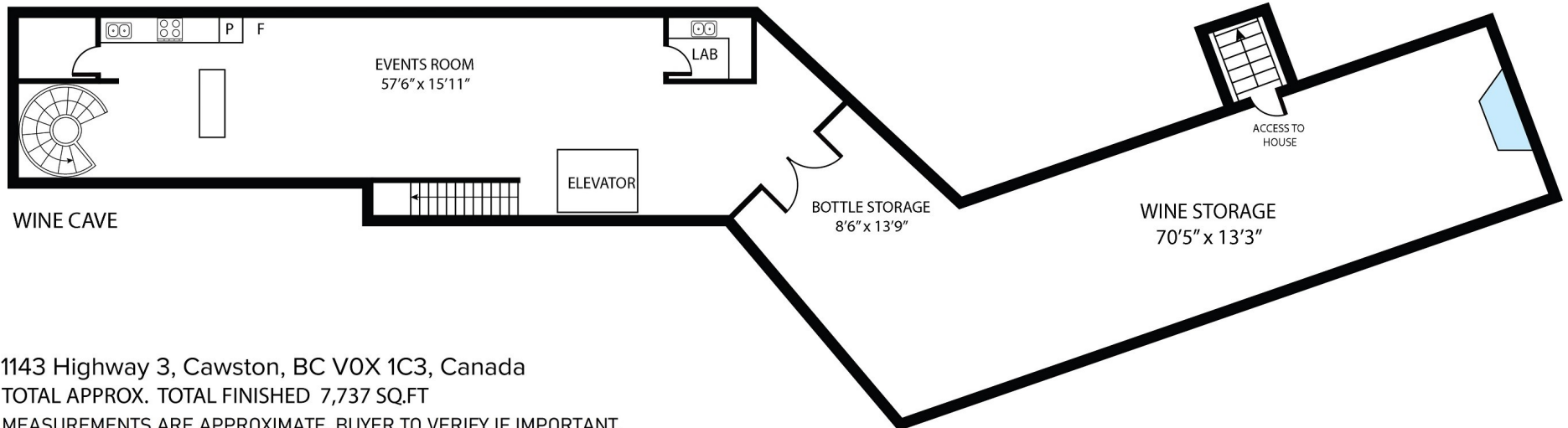
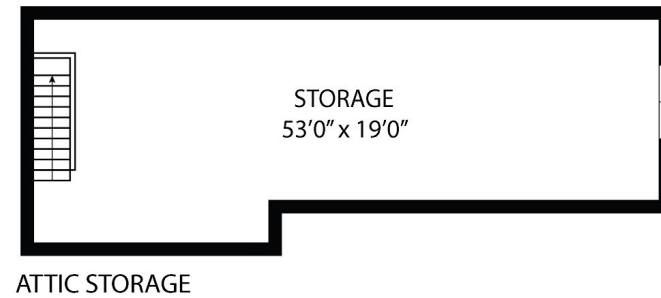
Jeffrey Sefton & Audrey Zimmermann
Real Broker
250-244-1762 / 250-689-9798

SEVEN STONES WINERY ESTATE 1143 HIGHWAY 3 - WINERY



WINE CAVE : 2,878 SQ.FT
MAIN LEVEL : 3,973 SQ.FT
ATTIC STORAGE : 886 SQ.FT

MAIN LEVEL



1143 Highway 3, Cawston, BC V0X 1C3, Canada
TOTAL APPROX. TOTAL FINISHED 7,737 SQ.FT
MEASUREMENTS ARE APPROXIMATE. BUYER TO VERIFY IF IMPORTANT.