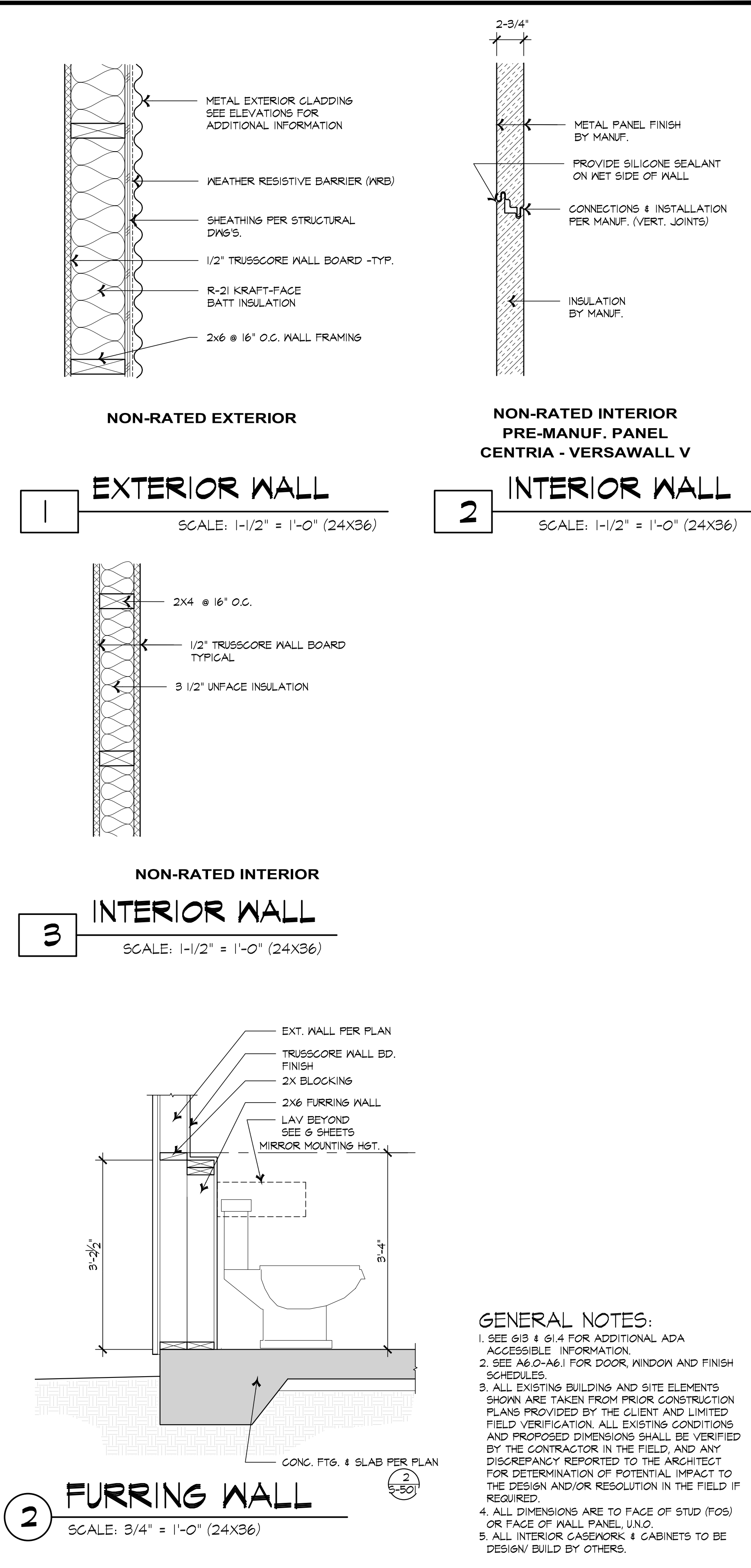
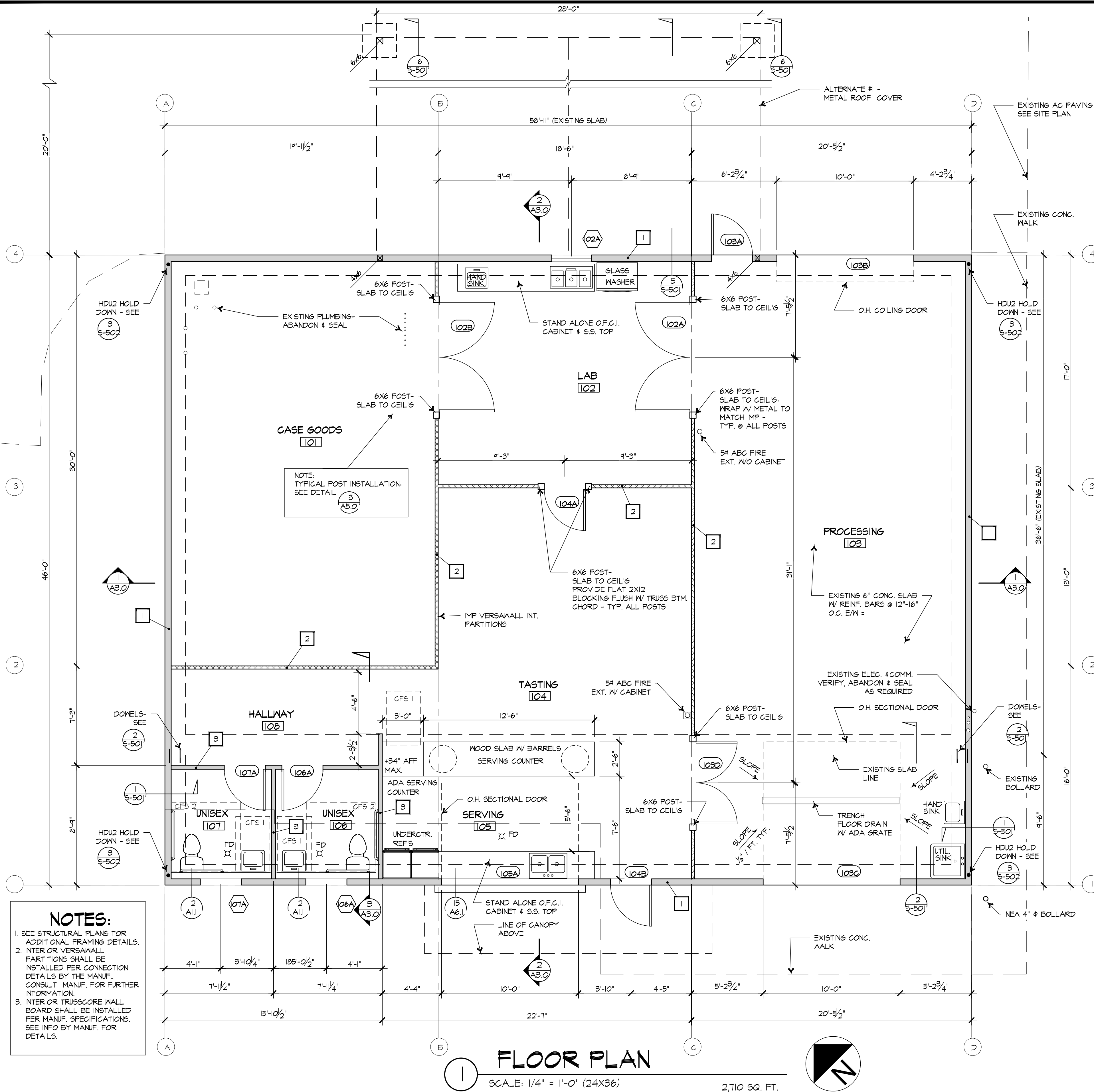


Drawing Name: V:\Projects - Current\Simple Machine LLC\20-0720_Simple Machine\Arch Set.dwg Plot Date: April 2, 2021 2:52 PM By: Joel Woodward
Last Save: April 2, 2021 2:52 PM



GENERAL NOTES:

- SEE G13 & G14 FOR ADDITIONAL ADA ACCESSIBLE INFORMATION.
- SEE A6.0-A6.1 FOR DOOR, WINDOW AND FINISH SCHEDULES.
- ALL EXISTING BUILDING AND SITE ELEMENTS SHOWN ARE TAKEN FROM PRIOR CONSTRUCTION PLANS PROVIDED BY THE CLIENT AND LIMITED FIELD VERIFICATION. ALL EXISTING CONDITIONS AND PROPOSED DIMENSIONS SHALL BE VERIFIED BY THE CONTRACTOR IN THE FIELD, AND ANY DISCREPANCY REPORTED TO THE ARCHITECT FOR DETERMINATION OF POTENTIAL IMPACT TO THE DESIGN AND/OR RESOLUTION IN THE FIELD IF REQUIRED.
- ALL DIMENSIONS ARE TO FACE OF STUD (FOS) OR FACE OF WALL PANEL, UNO.
- ALL INTERIOR CASEWORK & CABINETS TO BE DESIGN/ BUILD BY OTHERS.

AUSLAND GROUP

www.AuslandGroup.com
Eugene 541.345.1094
Grants Pass 541.476.3788
Medford 541.773.3387

MILESTONE:
CONSTRUCTION DOCUMENTS

ISSUE DATE: APRIL 02, 2021
PHASE: -
PROJECT # 20-0720

REV	DESCRIPTION

DRAWN BY: JW
DESIGNED BY: SMP
CHECKED BY:
APPROVED BY:

SIMPLE MACHINE WINERY
717 SOUTH PACIFIC HIGHWAY
TALENT, OR 971540

VERIFY SCALES

ORIGINAL DRAWINGS
BASE ON ONE INCH
IF NOT ONE INCH ON THIS
SHEET ADJUST SCALES
ACCORDINGLY

REGISTERED ARCHITECT
SCOTT M. PIGMAN
GRANTS PASS, OREGON
STATE OF OREGON

SHEET NUMBER
A1.1